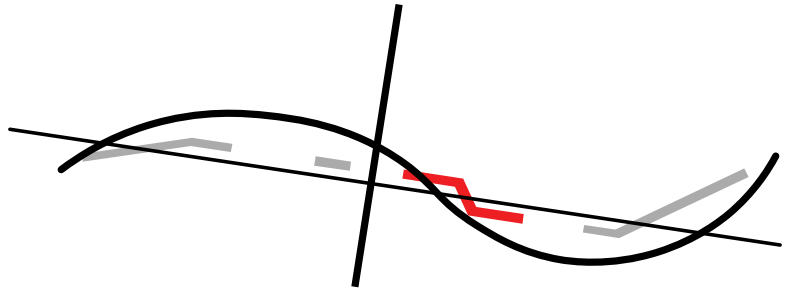


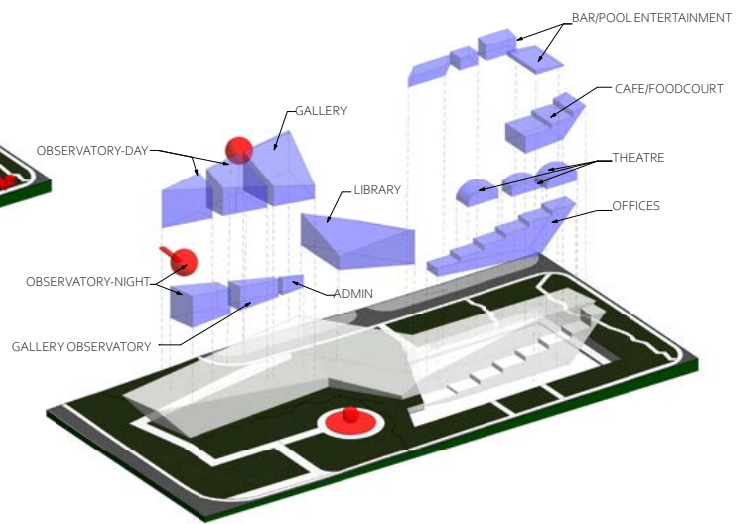
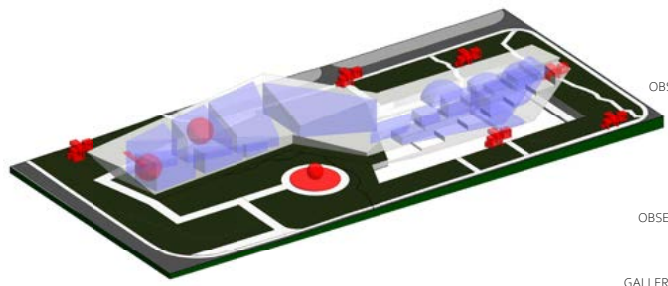
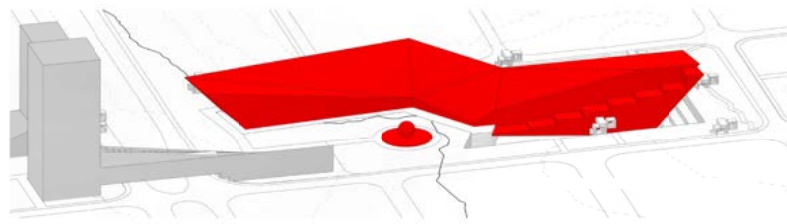
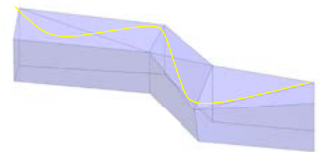
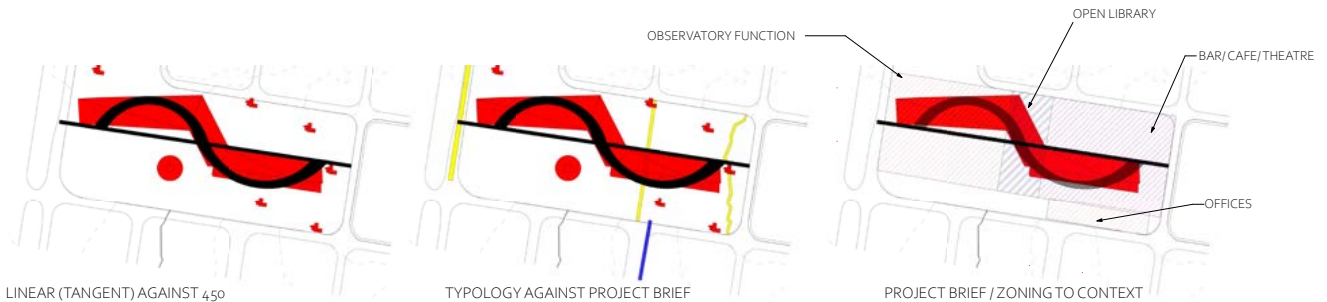


BLAKE DAPPANA

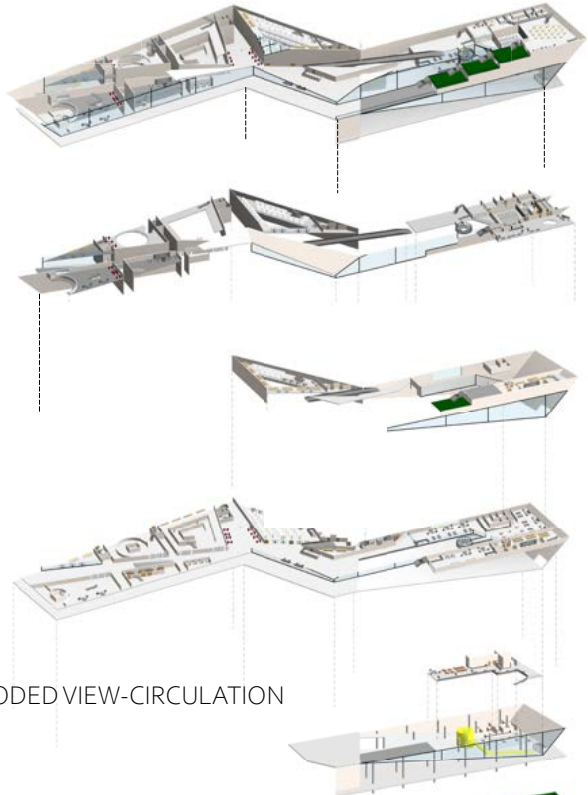


The concept obeys the two lines, where the form takes the linearity of the Object while the surface takes the organic form. The Typology of this project is a mixed-use building, where every organ serves a function to the context of its location. The complex is to bring people to the site during the evening and night while during the day it serves a different function as education and working purposes. The organs were detailed in a way that the flow of circulation have this itinerary of rotation where it captures the frontality of the building. The central circulation of the ramp and the circular lift became an essential piece of engagement of the building. It demonstrates Le Corbusier circulation and the Palladia villa about straight line, vertical void and axis of circulation.

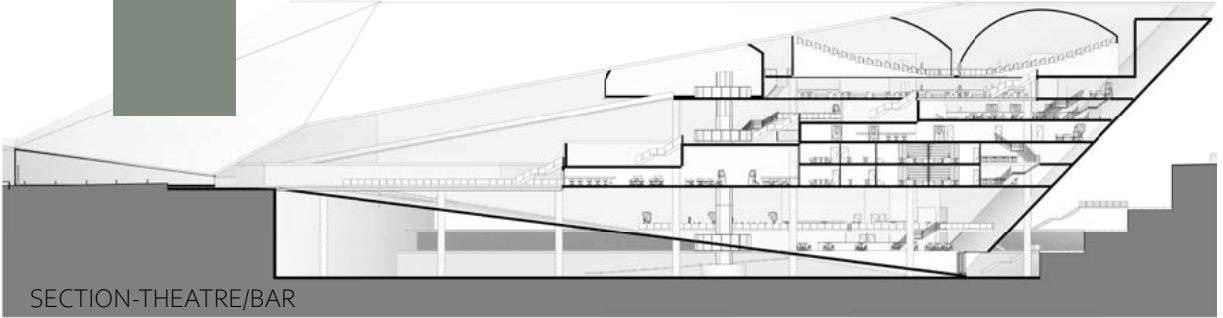
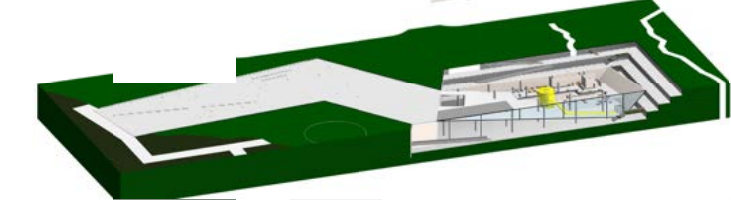
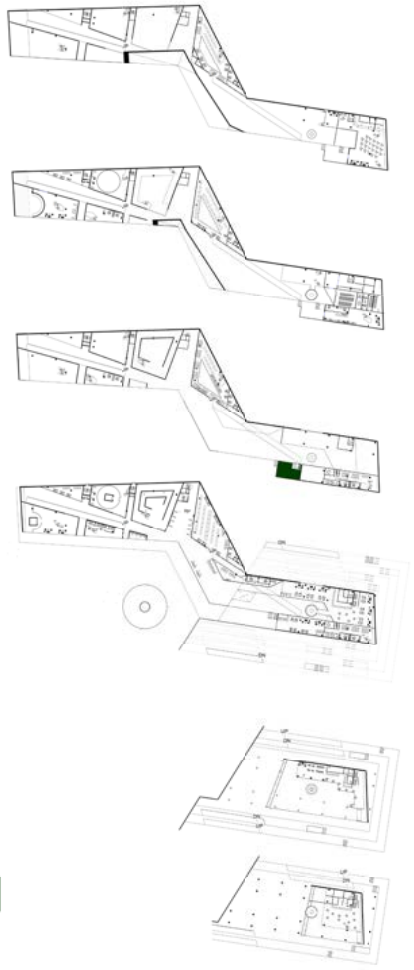




CIRCULATION AGAINST SECTION



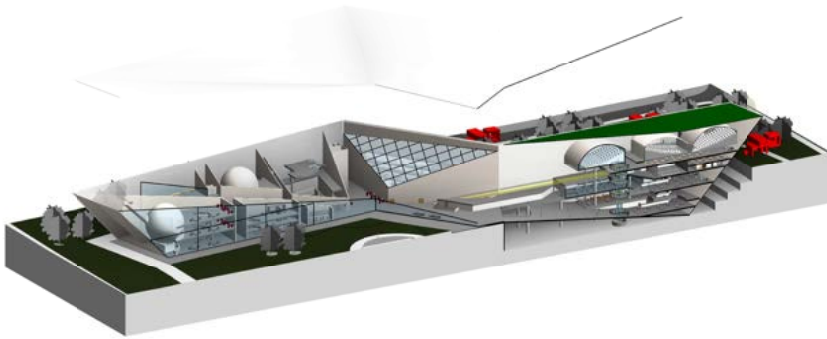
EXPLODED VIEW-CIRCULATION



SECTION-THEATRE/BAR



SECTION-OBSERVATORY-LIBRARY



SECTION-OBSERVATORY